

HART®

Fieldbus

Profibus

Intrinsic Safety

Configuration Tools

Semiconductors

Training

Custom Design

HART Configuration Software CONF401

The CONF401 is powerful and user-friendly. It provides easy configuration and monitoring of field instruments plus the ability to analyze data and modify instrument performance.

Features

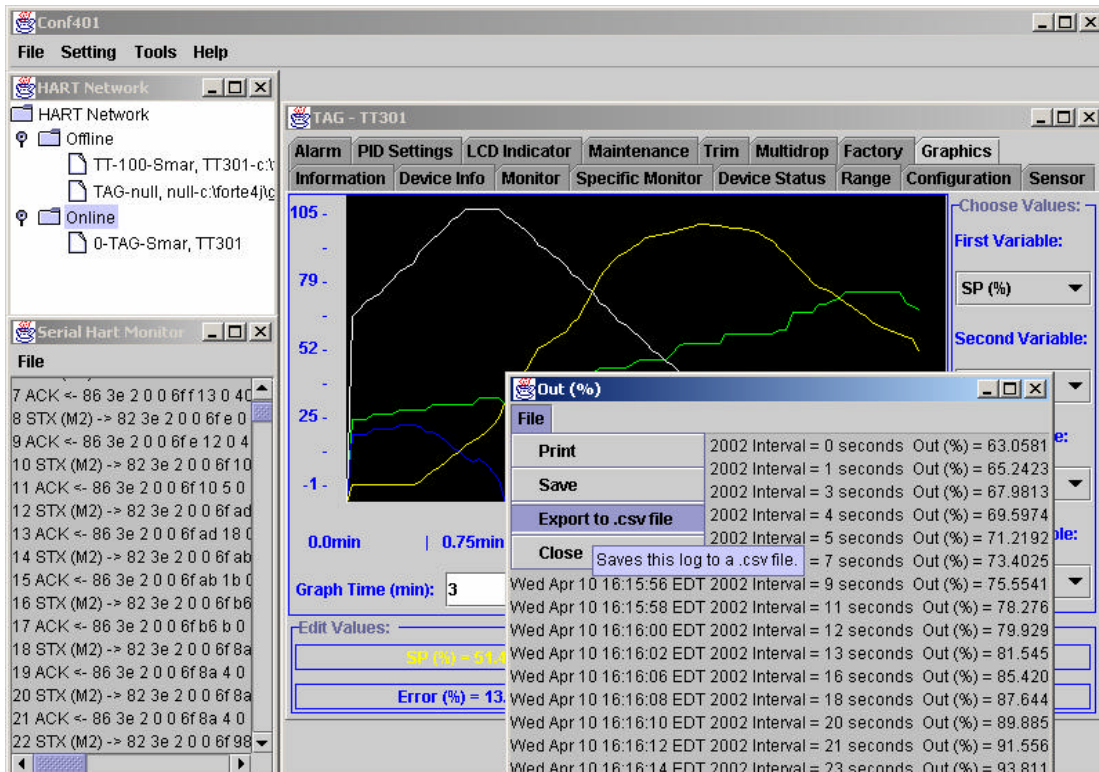
- Turns your personal computer into a fast configuration platform for HART devices.
- Fully compatible with Microsoft Windows '95, '98, 2000 and XP; Microsoft NT, and UNIX
- Provides full support for HART instruments
- Supports Multidrop operations
- One step installation
- Intuitive, easy to learn and use graphical interface.
- Compatible with any HART to EIA-RS232C interface.
- Implemented using JAVA technology.
- Seamless integration with Smar's HPC301 palm configuration software.
- Configurations can be made off-line and stored for later use.
- Bus monitoring through the HART serial monitor
- Extensive trending and graphics capabilities
- Device and trending data easily exported in standard formats (.csv and .txt).

The CONF401 HART configuration software package turns your desktop computer into a powerful, full featured configurator and setting manager for your HART network and instruments. CONF401 gives you one simple platform to configure HART devices from multiple manufacturers; test and adjust network settings, modify instrument operations and manage your HART network right from your desk top personal computer.

CONF401 is compatible with your Microsoft Windows or UNIX desktop, and includes the industry-leading software tools and management functions you've come to expect from SmarResearch.

CONF401:

- Turns your desktop computer into a fast configuration platform and network manager for HART devices operating in generic mode from all vendors.
- Gives you one easy to learn and use program for all your HART network configuration needs.
- Provides access to most Common Practice functions in devices from all manufacturers plus full support for selected devices.
- Supports Multidrop operation.
- Incorporates a one step installation process, and easy to use graphic interface, plus a help system to reduce training and eliminate the need for extensive manuals.
- Seamlessly integrates with Smar's hand held HPC301 PALM configuration software.
- Includes full Bus monitoring through the included HART serial monitor
- Integrates complete trending and graphics capabilities
- Includes the ability to set up configurations off-line and store them for later use.
- Free upgrades for six months plus additional instrument drivers as they are added to the program.



CONF401: Setting New Standards for HART Configuration Software

CONF401 uses the latest control and user interface tools available to bring you a powerful yet simple to use way to manage all of your HART instruments, regardless of manufacturer. It incorporates a user interface designed for easy use and fast learning. While using the industry standard HART command set, CONF401 adds power and flexibility:

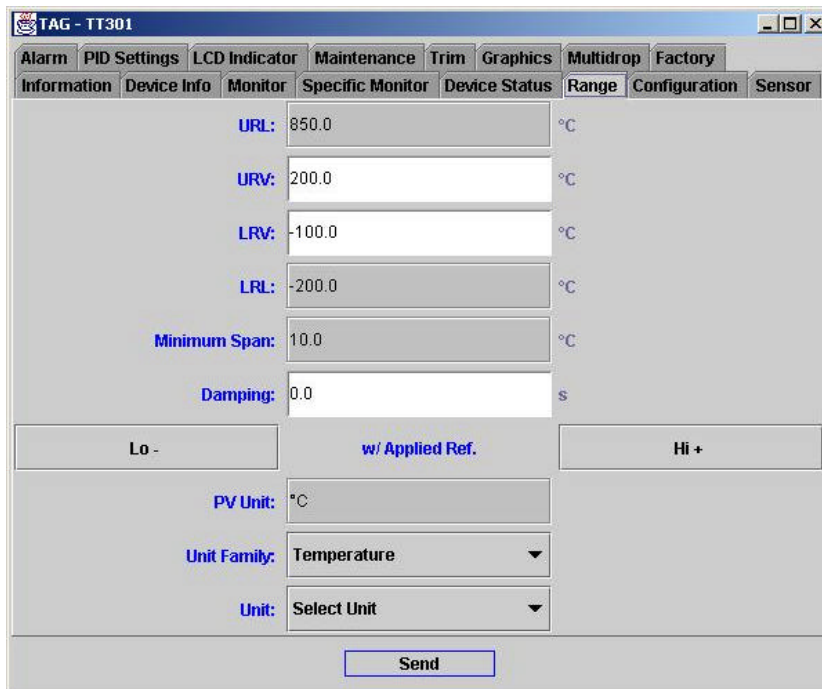
- CONF401 is easily modified for most local languages and operating needs.
- All devices are integrated into a single program. Users do not have to learn instrument-specific interface protocols.
- All instrument functions, features, and parameters are included.
- Program and instrument password protection and user configuration tools give you the ability to control individual access. CONF401 can easily be configured for operators, maintenance staff, supervisors, and engineers. You'll have one tool everyone who works with your HART network can use.

Handle All HART Devices Easily.

Configuring devices from different vendors or with different functions is easy with CONF401. Each device control set is complete for that device, and the HART Universal/Common Practice Command Set is supported. Because the user controls are consistent throughout the program device specific training is no longer an issue. Every function for every instrument is incorporated in an easy to learn and use way.

Easy Data Entry

Entering data is easy with CONF401. And because each screen is designed for the specific device, data entry is held to a minimum for easier field use.



Specifications

Operating Systems Supported

- Windows 95, 98
- Windows 2000
- Windows NT
- Windows XP
- UNIX

HART Instruments Supported

- All HART instruments that use the Universal and Common Practice command sets
- All Smar instruments with full command sets
- Selected instruments from other major manufacturers

Instrument support is constantly being added. Check the SmarResearch web site (www.smarresearch.com) for the most up-to-date list.

Languages Available

- English
- German (planned)
- Portuguese (planned)

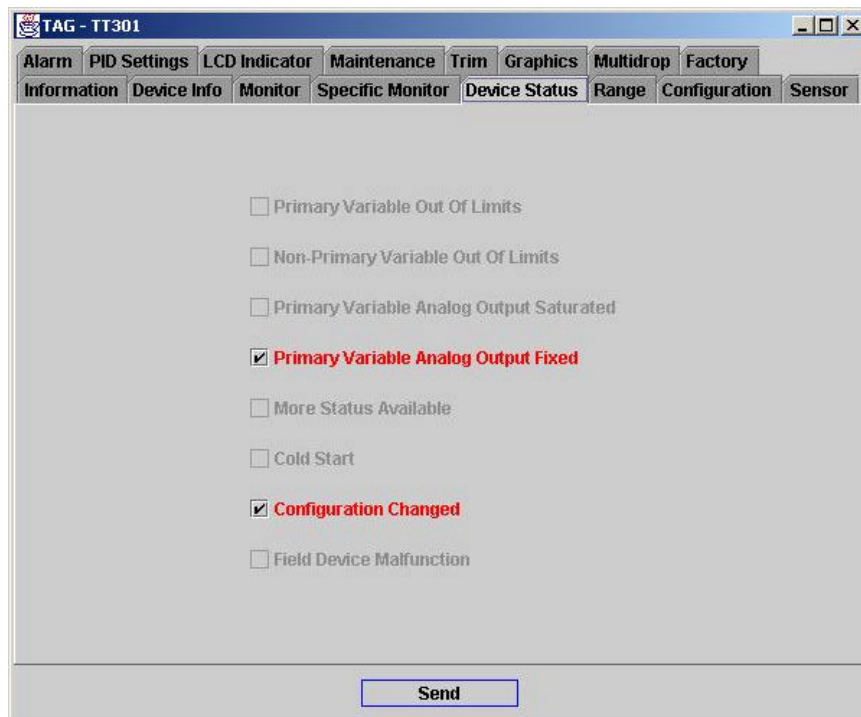
Communications

- SRC's HI311 Interface or any other HART to EIA-RS232C interface, is needed for connection to HART devices or your HART network.

Hardware Requirements

An IBM - compatible computer with the following minimum specifications:

- Pentium 166MHz processor
- Windows 95/98/NT/2000/XP operating system
- One available serial port
- CD-ROM drive
- 128Mb RAM



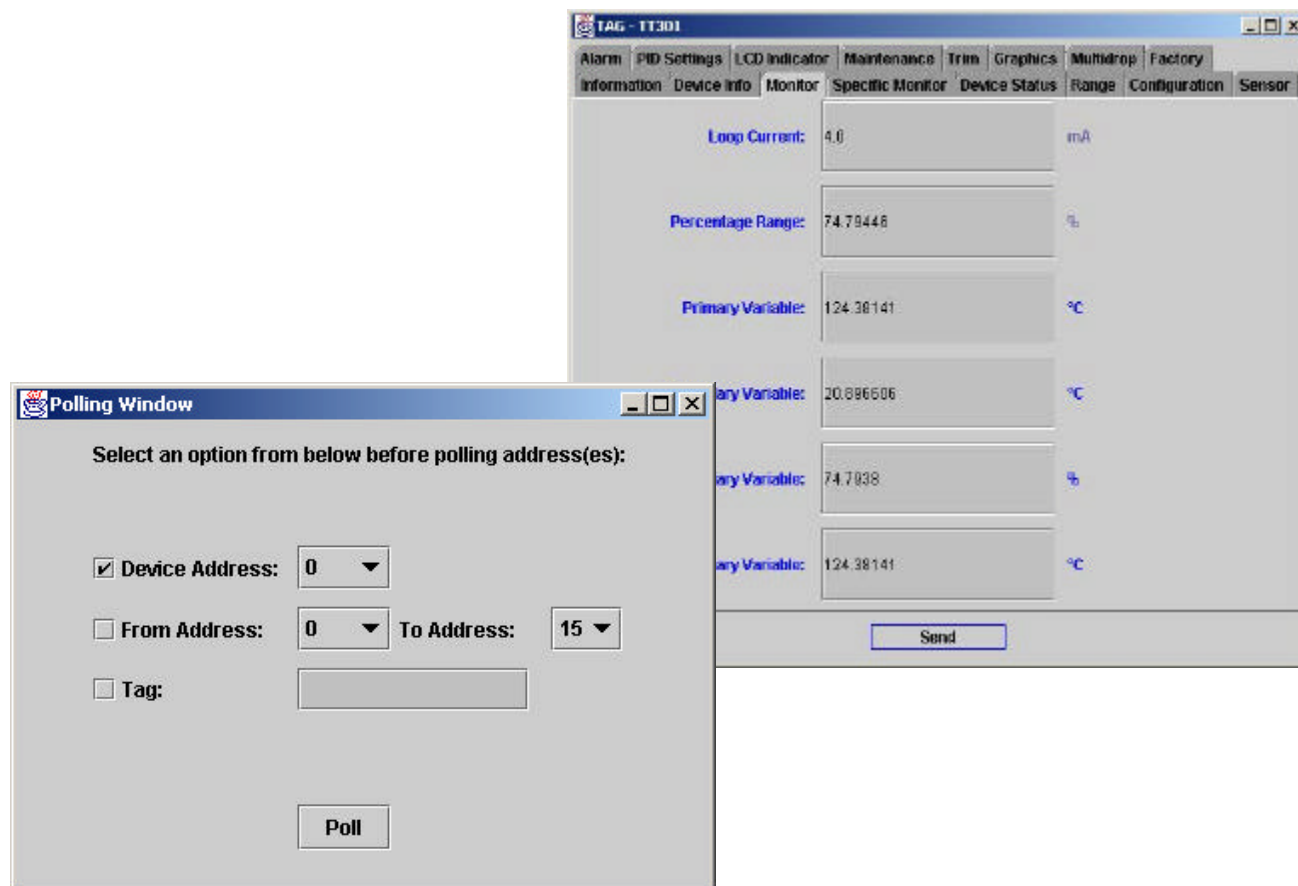
Commands Supported

Universal Commands

- #0 - Read Unique Identifier
- #1 - Read Primary Variable
- #2 - Read Loop Current and Percent of Range
- #3 - Read Dynamic Variables and Loop Current
- #6 - Write Polling Address
- #11 - Read Unique Identifier Associated with Tag
- #12 - Read Message
- #13 - Read Tag, Descriptor, Date
- #14 - Read Primary Variable Transducer Information
- #15 - Read Device Information
- #16 - Read Final Assembly Number
- #17 - Write Message
- #18 - Write Tag, Descriptor, Date
- //#19 - Write Final Assembly Number

Common Practice Commands

- #33 - Read Device Variables
- #34 - Write Primary Variable Damping Value
- #35 - Write Primary Variable Range Values
- #36 - Set Primary Variable Upper Range Value
- #37 - Set Primary Variable Lower Range Value
- #40 - Enter/Exit Fixed Current Mode
- #41 - Perform Self Test
- #42 - Perform Device Reset
- #43 - Set Primary Variable Zero
- #44 - Write Primary Variable Units
- #45 - Trim Loop Current Zero
- #46 - Trim Loop Current Gain
- #47 - Write Primary Variable Transfer Function
- #48 - Read Additional Device Status
- //#49 - Write Primary Variable Transducer Serial Number
- #50 - Read Dynamic Variable Assignments
- #51 - Write Dynamic Variable Assignments



Smar Research reserves the right to make changes to design and functionality of any product without notice. Smar Research does not assume any liability arising out of the application or use of any product. Smar Research, Technology Source, and the SRC logo are registered trademarks of Smar Research Corporation. The HART, Fieldbus, and Profibus Foundation logos are trademarks of their respective owners.

Smar Research Corporation

4250 Veterans Memorial Highway
Holbrook, NY USA 11741
Tel: 631.737.3111 Fax: 631.737.3892
techinfo@SmarResearch.com
www.SmarResearch.com



©Smar Research Corporation



6



CONF401DS - 0602